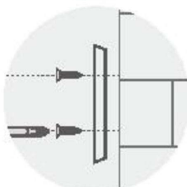


## Device Installation

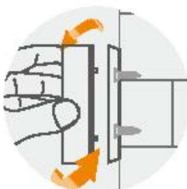
1. Remove the back cover from the alarm panel by rotating it anti-clockwise.



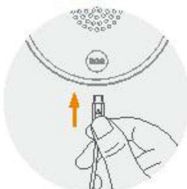
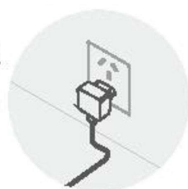
2. Secure the back cover on to the wall using the provided screw plugs (if required)



3. Ensure the on/off switch on the back of the alarm panel is switched on, then fix the hub on to the back cover.



4. Connect the alarm panel to a power supply using the provided micro USB cable and adapter.



### Note:

Do not heat or drop the System in case of the damage of the component inside.

## App Setup

### Mobile App Download

Please enter keyword **"Smart Life"** on your smart phone to download the App from the Apps store or Google Play.



Smart Life

Wi-Fi Network: 2.4GHz (802.11 b/g/n).

iOS Requirements: iPhone 4S or newer running iOS 8 or higher.

ANDROID Requirements: Android 4.0 or newer.

### Create an Account

Tap on **"Register"** and follow these steps to create an account for your devices.